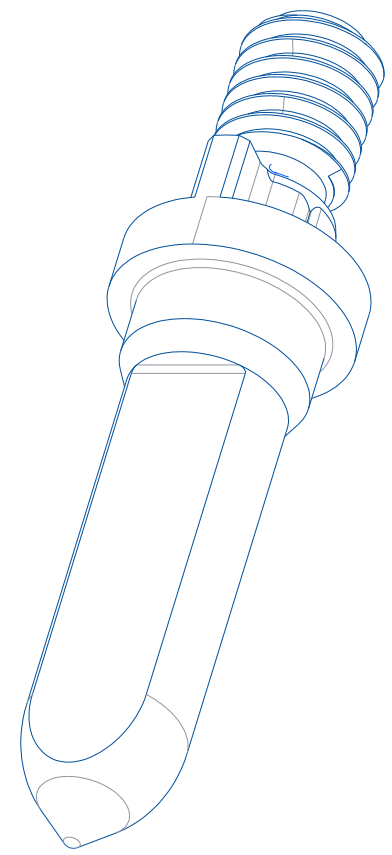
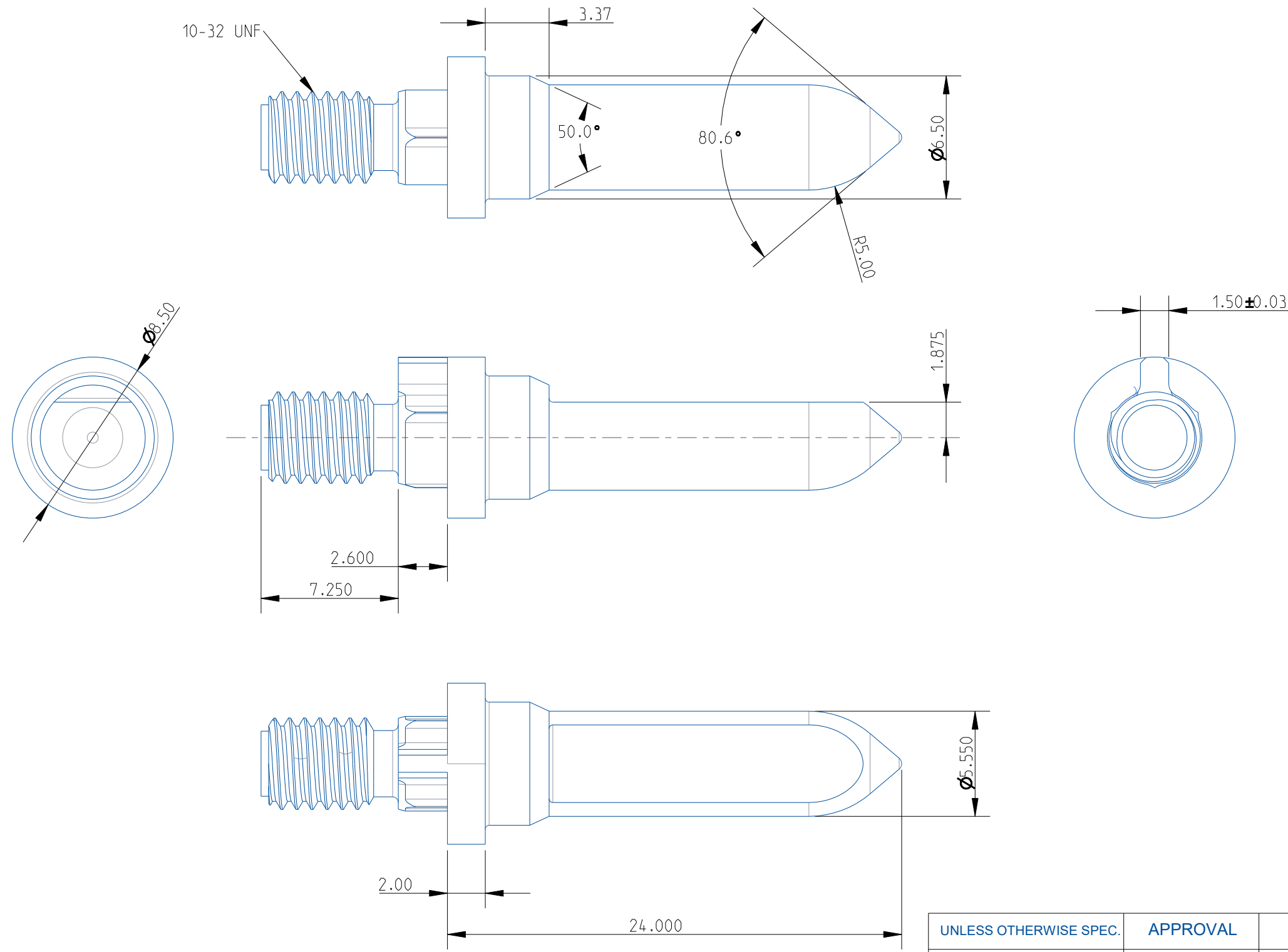


4 3 2

This document consists of proprietary information and is confidential.
Any use, reproduction, distribution, or disclosure of this information is
strictly prohibited without the express written consent of PISAS.

COPYRIGHT PERFORMANCE INTERCONNECT SAS 2025. All Rights Reserved.

REV.	DESCRIPTION	DATE	APPROVAL
1	RELEASE FOR PROTO RUN	Mar-08-25	
2	ADD THREAD SIZE	23-04-25	



FINISH:

Surface finish Ra ≤ 2µm
Nickel electroplate, fully bright, 6.35µm thick, over Copper electroplate, 2.54µm thick.

UNLESS OTHERWISE SPEC. DIMENSIONS ARE IN MM TOLERANCES ON WHOLE No. +/- DECIMAL: .X +/- 0.20 .XX +/- 0.10 .XXX +/- 0.05 X/X +/- ANGLE +/- HOLE DIA. +/- 0.08 MAXIMUM WARP 0.10 PER 100mm OF LENGTH	APPROVAL	DATE	PERFORMANCE INTERCONNECT SAS	
	DRAWN	Mar-08-25		
	CHECKED			
	PROJ.ENG.			
	MANUF.ENG.			
	Q.A.		TITLE: Keyed standard backplane guide	
MATERIAL: Brass C2100	REMOVE ALL BURRS AND SHARP EDGES		SIZE: B	PART NO. KBBUB370ZZB
FINISH: SEE NOTES	DO NOT SCALE DRAWING	SCALE: 4.000	SHEET 1 OF 1	
			REV. 2	